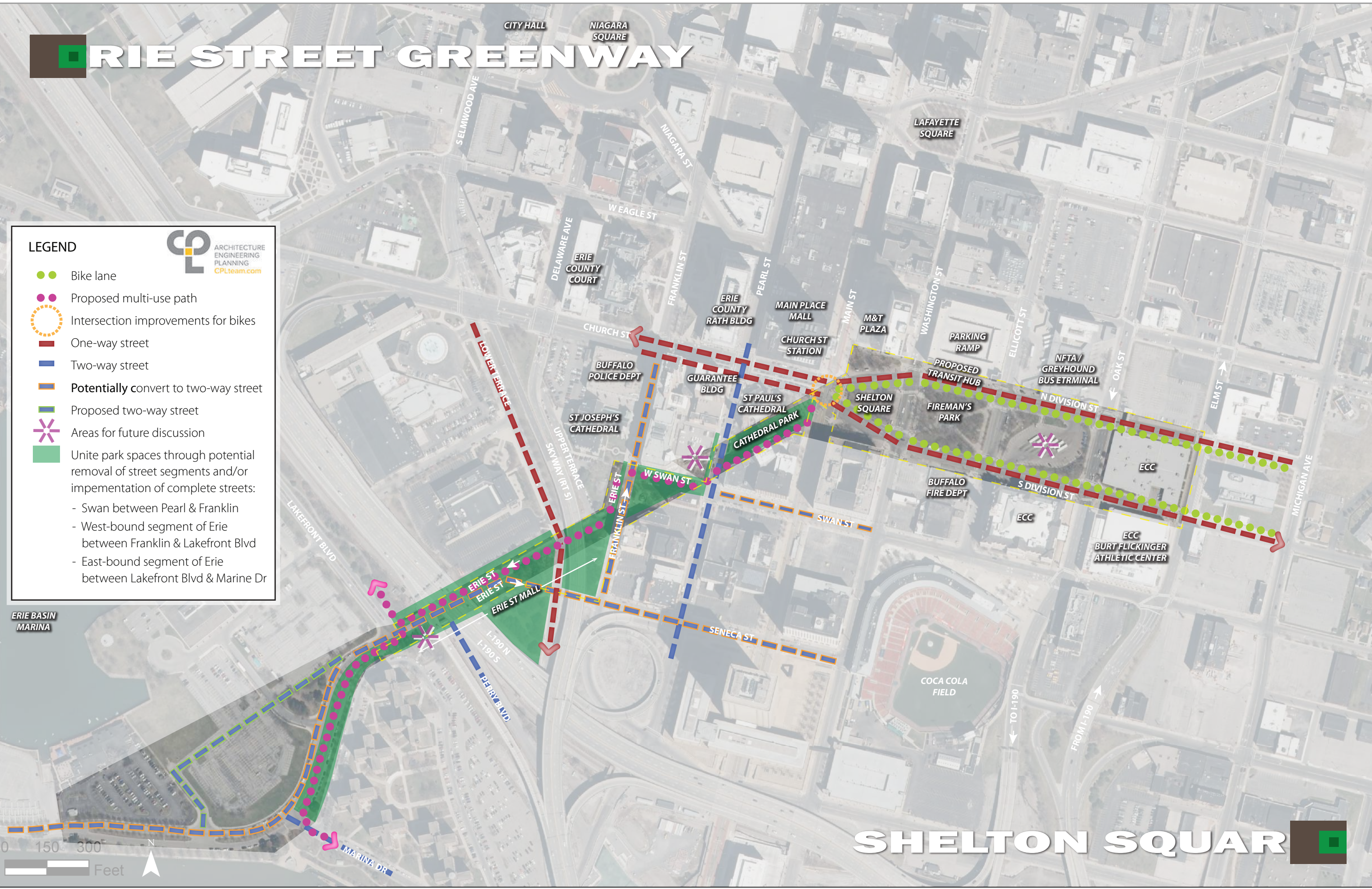


ERIE STREET GREENWAY

LEGEND

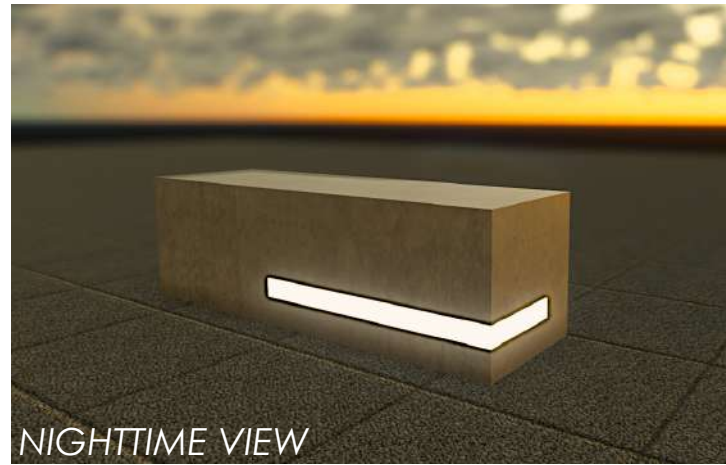


- Bike lane
- Proposed multi-use path
- Intersection improvements for bikes
- One-way street
- Two-way street
- Potentially convert to two-way street
- Proposed two-way street
- ✳ Areas for future discussion
- Unite park spaces through potential removal of street segments and/or impementation of complete streets:
 - Swan between Pearl & Franklin
 - West-bound segment of Erie between Franklin & Lakefront Blvd
 - East-bound segment of Erie between Lakefront Blvd & Marine Dr



SHELTON SQUARE

Bench option 1



CONCRETE BASE

- REINFORCED CONCRETE FOUNDATION
- POLISHED SMOOTH

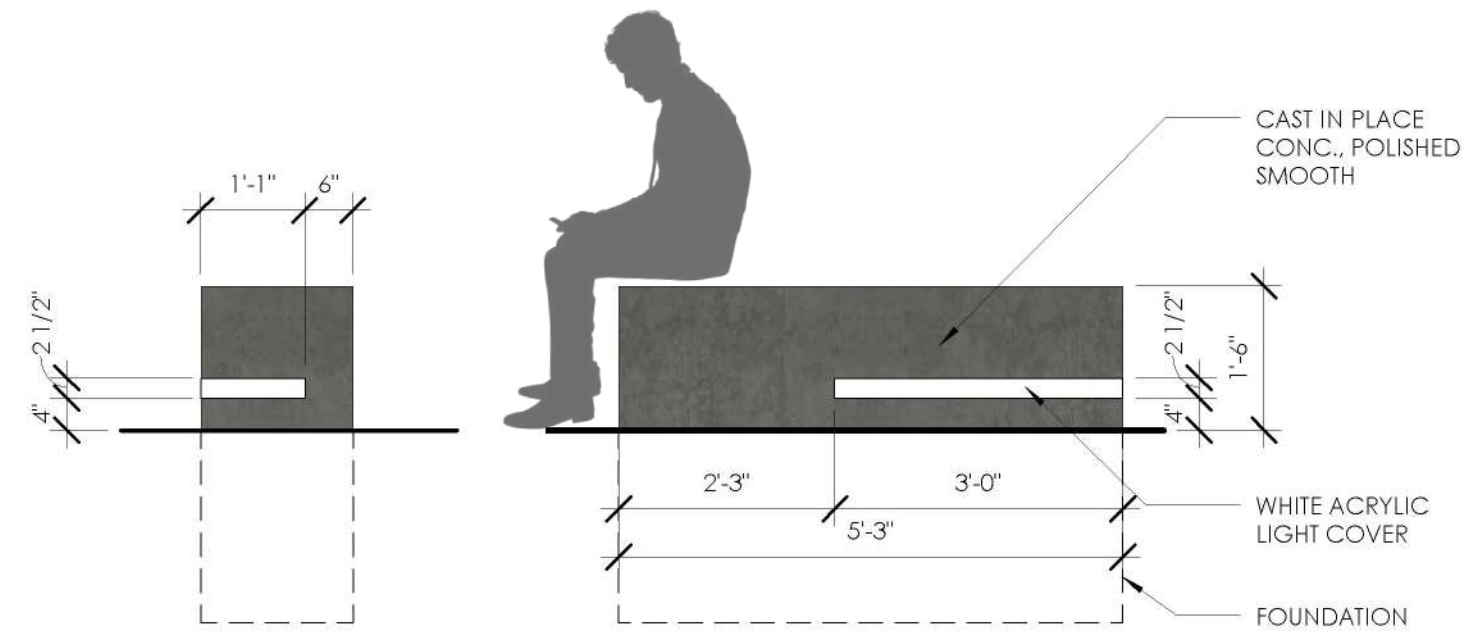
LED LIGHTING

- Kluls Design*
- RECESSED HR-LINE LED EXTRUSION
 - FROSTED COVER
 - BASE FOAM FOR EMBEDDING IN CONCRETE

RENDERING_TYPICAL ELEMENT

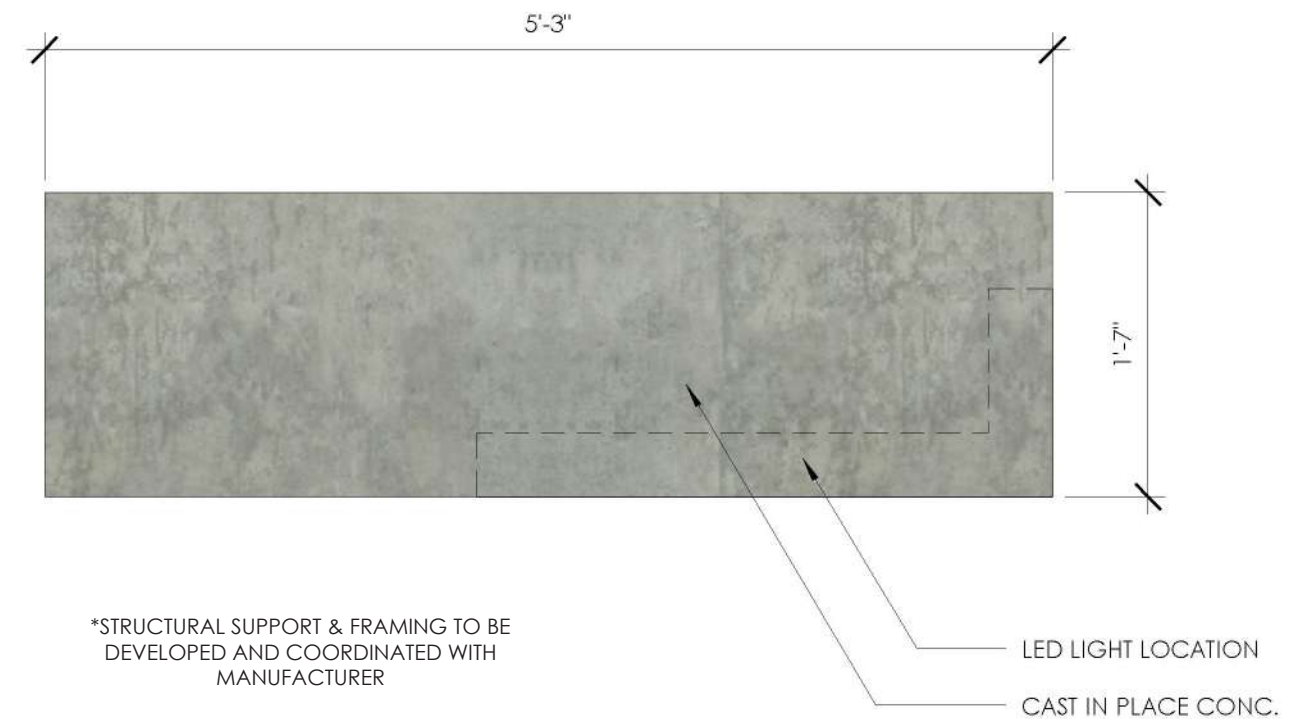
01. Bench Element

The concept for the Shelton Square - Erie Street Greenway employs unique lighting techniques to lead pedestrians through the space through the illumination of vertical and horizontal surfaces and key focal points. The design for the benches is a clean contemporary form that incorporates a strip of linear LED lighting that wraps around one corner of the bench. In addition to illuminating the vertical faces of the bench and adjacent horizontal ground plane, the benches also lend to wayfinding along the corridor. The benches should be oriented parallel to the main direction of travel through the corridor, so that the long strip of light on the face of the bench identifies the path of travel and leads pedestrians through the space.



TYPICAL ELEVATION

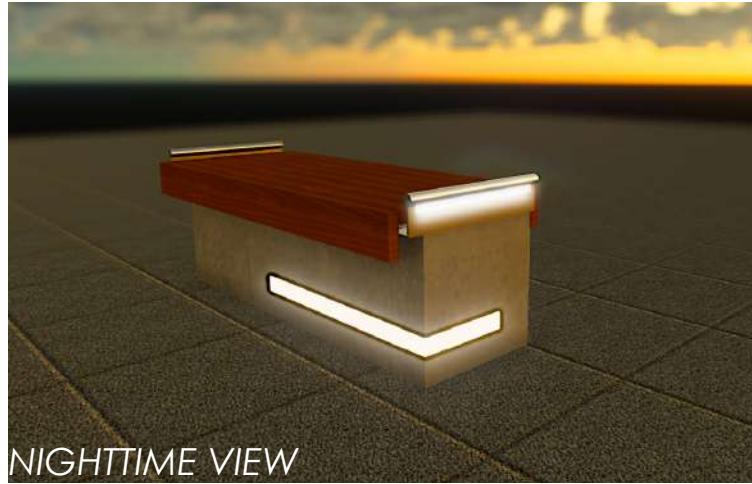
SCALE: 1/2"=1'-0"



PLAN CONFIGURATION

SCALE: 1"=1'-0"

Bench option 2



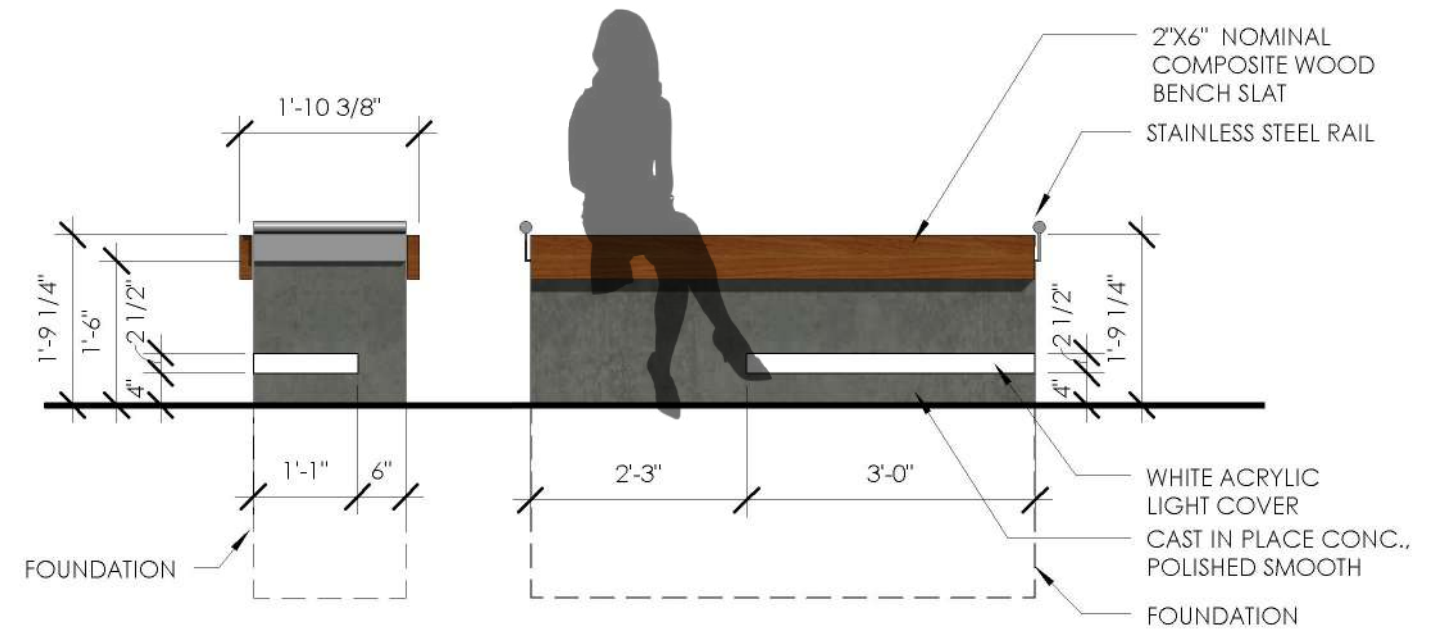
RENDERING_TYPICAL ELEMENT

POLYWOOD SEAT
 • PREMIUM WOOD GRAIN
 • COLOR TBD

STAINLESS STEEL LIT HANDLE
 ETI International LLC
 • 1.9" OD x 18" LENGTH
 • STAINLESS STEEL

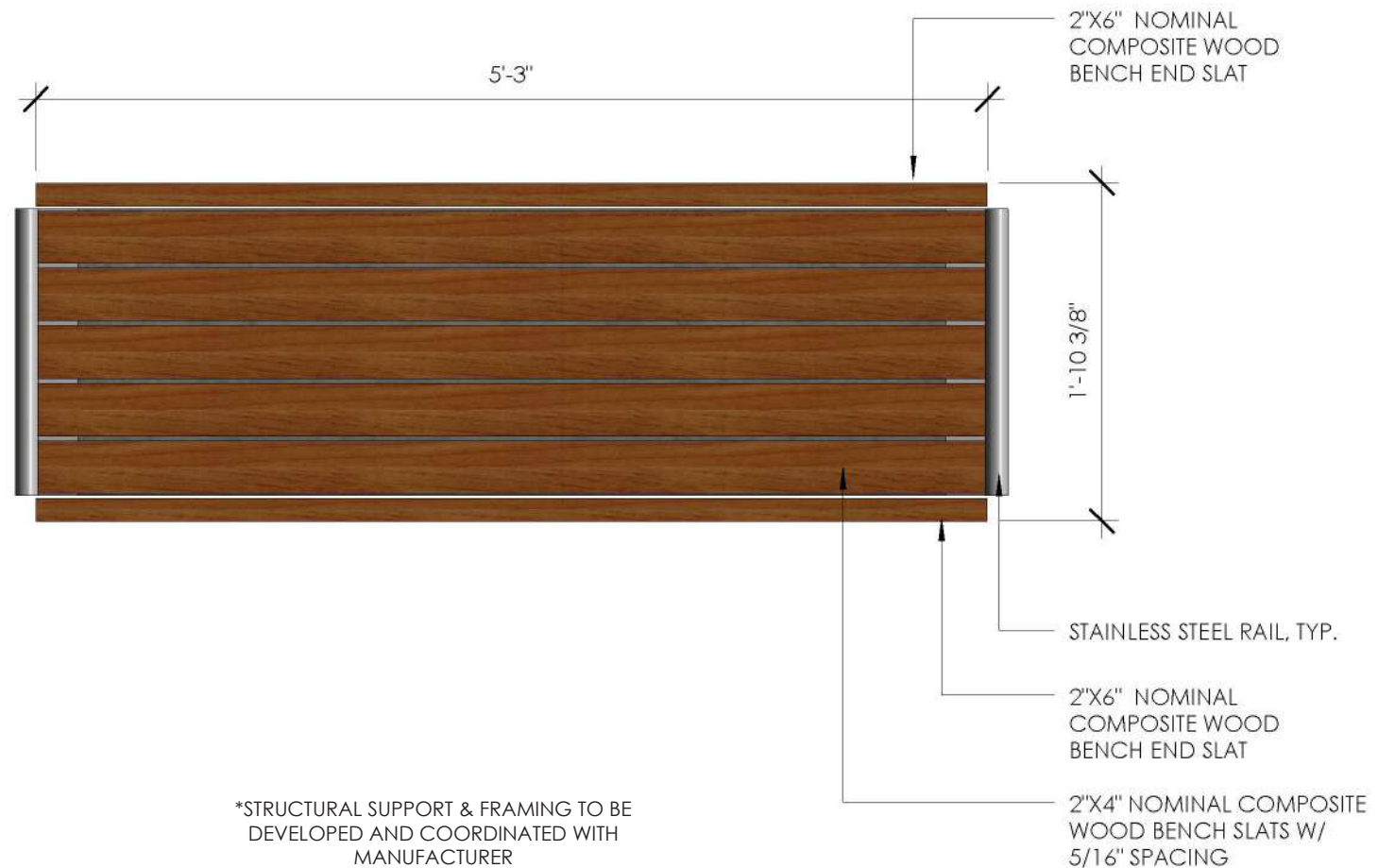
CONCRETE BASE
 • REINFORCED
 • CONCRETE FOUNDATION
 • POLISHED SMOOTH

LED LIGHTING
 Kluls Design
 • RECESSED HR-LINE LED EXTRUSION
 • FROSTED WHITE COVER
 • BASE FOAM FOR EMBEDDING IN CONCRETE



TYPICAL ELEVATION

SCALE: 1/4"=1'-0"



PLAN CONFIGURATION

SCALE: 1"=1'-0"

02. Bench Element_with Polywood Seat

The concept for the Shelton Square - Erie Street Greenway employs unique lighting techniques to lead pedestrians through the space through the illumination of vertical and horizontal surfaces and key focal points. The design for the benches is a clean contemporary form that incorporates a strip of linear LED lighting that wraps around one corner of the bench. In addition to illuminating the vertical faces of the bench and adjacent horizontal ground plane, the benches also lend to wayfinding along the corridor. The benches should be oriented parallel to the main direction of travel through the corridor, so that the long strip of light on the face of the bench identifies the path of travel and leads pedestrians through the space. This version of the bench, which includes a polywood seat, should be utilized along streets and in areas with high transit activity.

Option 1



RENDERING_TYPICAL ELEMENT

ACRYLIC PANEL

- 3Form
- CHROMA XT
- GHOST CENTERED
- THICKNESS BASED ON MANUFACTURER RECOMMENDATIONS
- POINT SUPPORT SYSTEM
- BACK LIT W/LED LIGHT

ALUMINUM SHEET

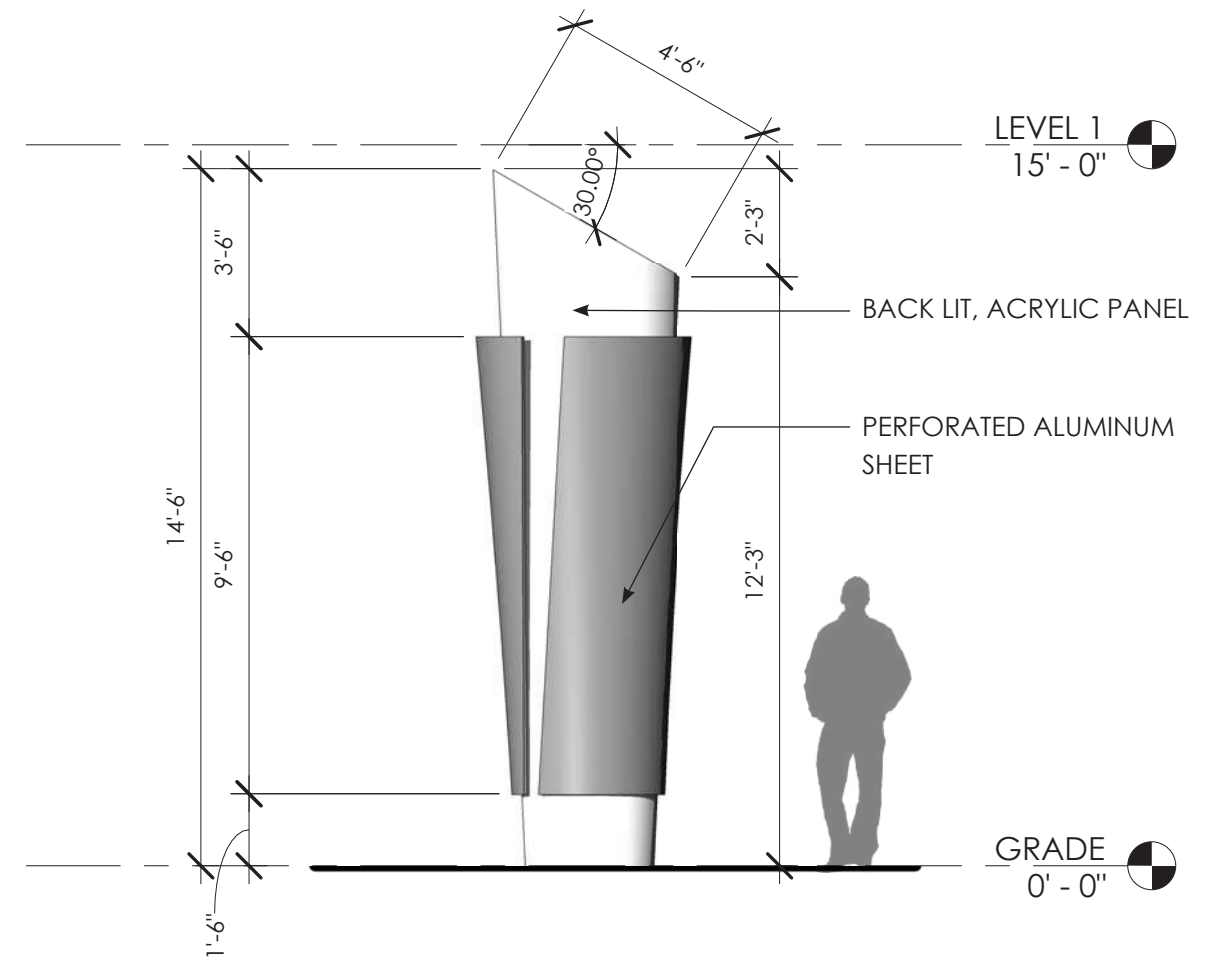
- Zahner
- PRECISION CUT PERFORATED IMAGE (TBD). MIRROR POLISH
- THICKNESS BASED ON MANUFACTURER RECOMMENDATIONS
- BACK LIT W/LED LIGHT

CONCRETE BASE

- 18" ABOVE GRADE
- REINFORCED
- CONC. FOUNDATIONS PER CODE

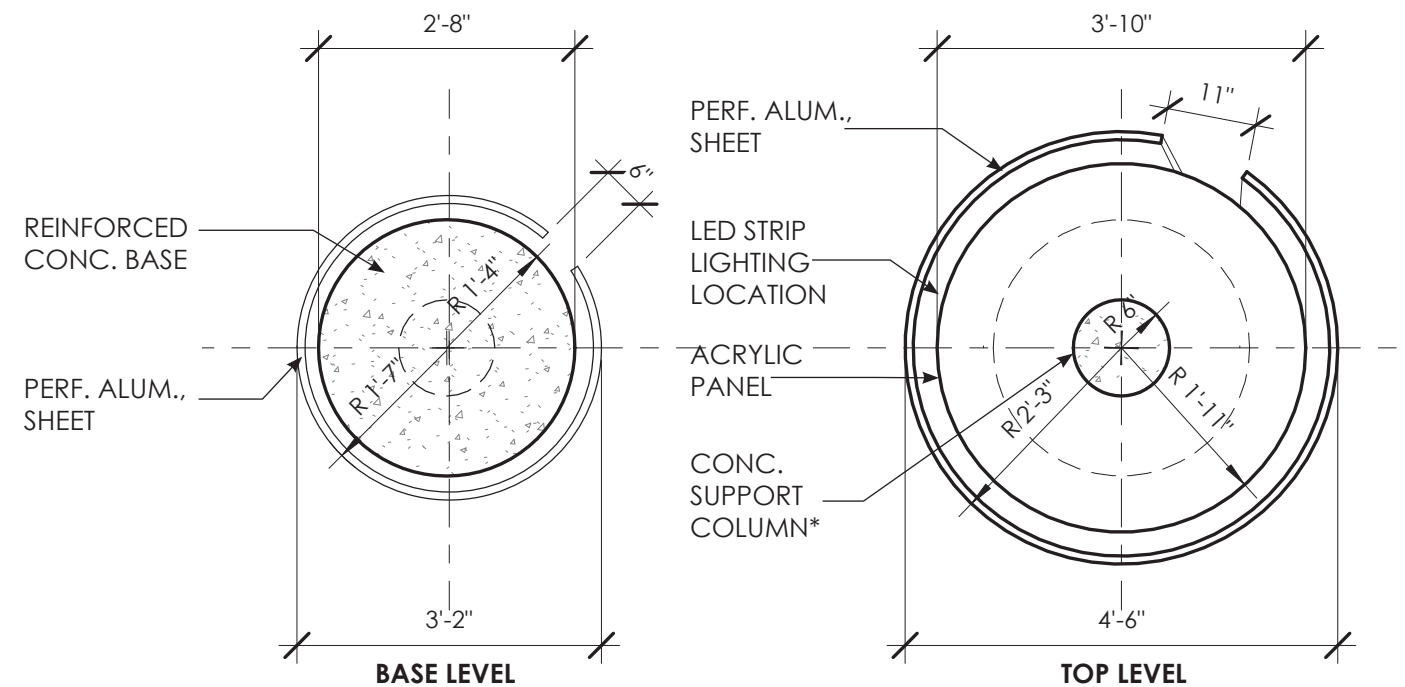
LED LIGHTING

- MODALIGHT
- SUPER NEON X FLAT
- FLEXIBLE LINEAR EXTERIOR
- COORDINATE LIGHT LAYOUT & ATTACHMENT W/ELEC. ENGINEER & LOCAL UTILITIES



TYPICAL ELEVATION

SCALE: 1/4"=1'-0"



*STRUCTURAL SUPPORT & FRAMING TO BE DEVELOPED AND COORDINATED WITH MANUFACTURER

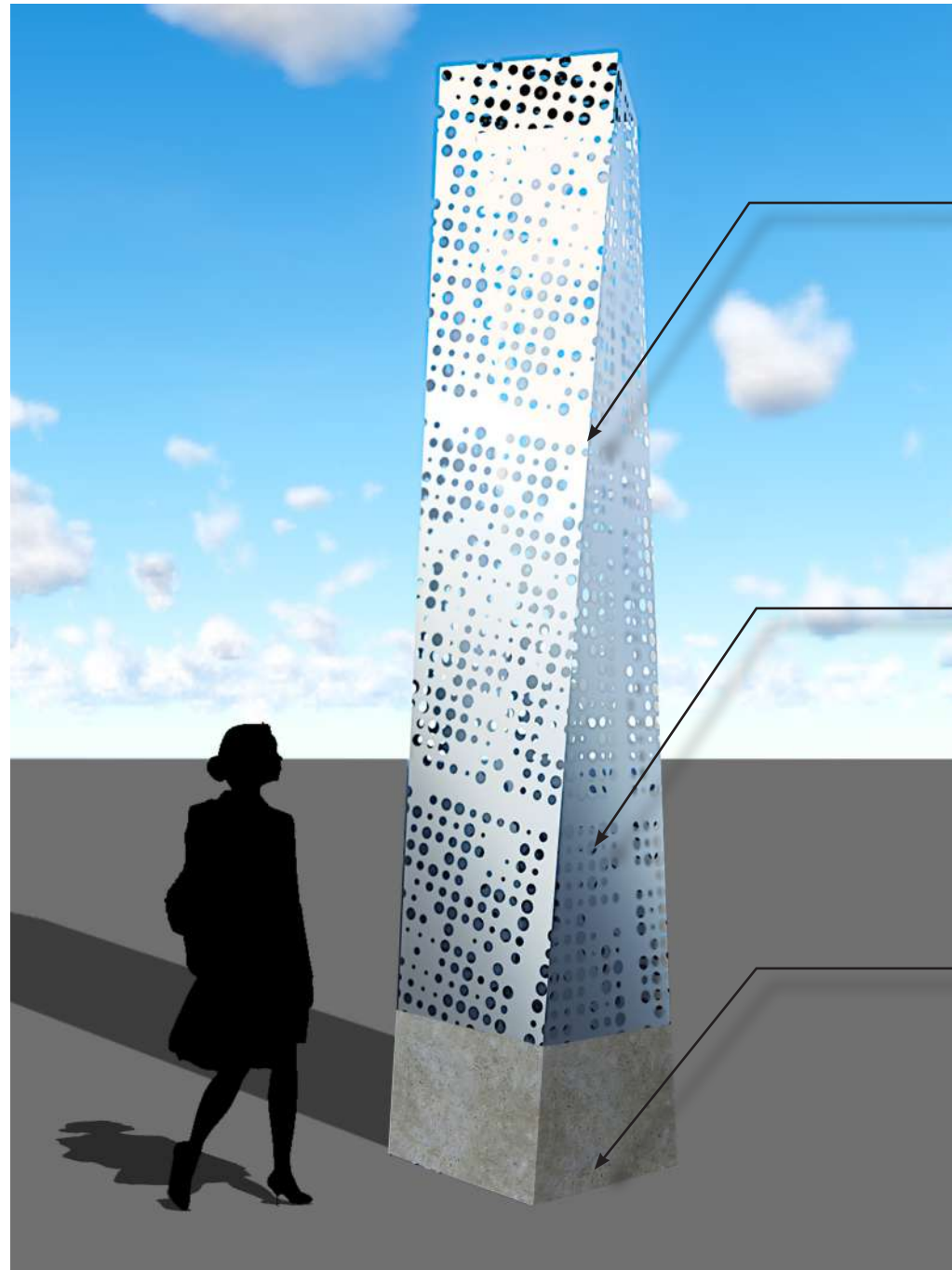
PLAN CONFIGURATION

SCALE: 1/2"=1'-0"

01. Vertical Element 1

The idea for this vertical element was to suggest both place and movement. The curved element points and 'lifts' upward towards the sky. The entire element is meant to evoke a torch—lighting the way. The white material is an illuminated acrylic or resin panel wrap. The perforated screen wraps around that. The perforated screen could have text or imagery specific to the project or Buffalo History. Similarly, the white resin panel could also have text or imagery. The acrylic panel would be backlit and could take on various colors depending on holiday, season, event, etc.

Option 2



ALUMINUM SHEET

- Zahner
- PRECISION CUT PERFORATED IMAGE (TBD).
- MIRROR POLISH
- INTERNALLY LIT WITH SINGULAR UPLIGHT

LED LIGHTING

- ModaLIGHT
- SUPER NEON X FLAT
- FLEXIBLE LINEAR EXTERIOR
- COORDINATE LIGHT LAYOUT & ATTACHMENT W/ELEC. ENGINEER & LOCAL UTILITIES

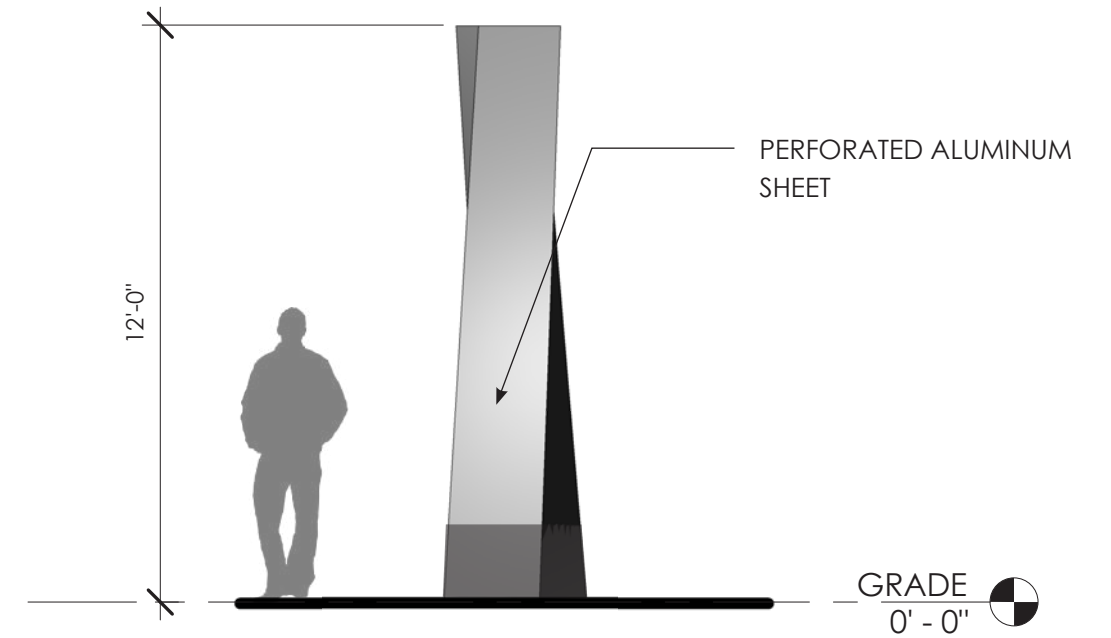
CONCRETE BASE

- 18" ABOVE GRADE
- REINFORCED
- CONC. FOUNDATIONS PER CODE

RENDERING_TYPICAL ELEMENT

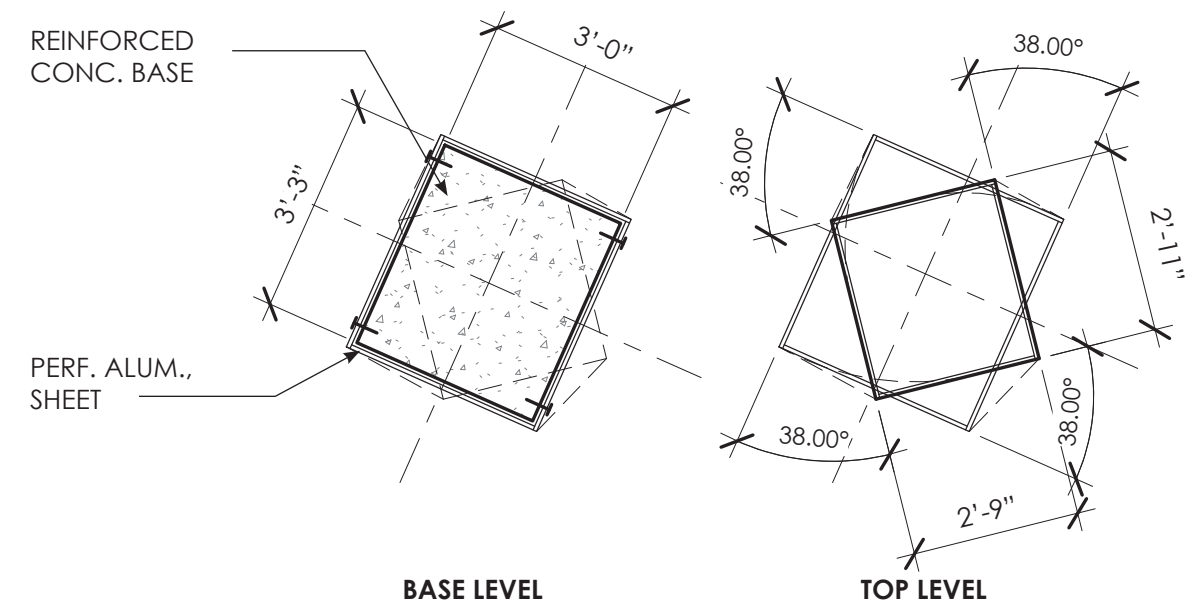
02. Vertical Element 2

The idea for this vertical element also attempts to suggest movement for a static element. Although rectilinear, the twist of the form provides slight curvature and creates a dynamic shape. The element is meant to evoke a lantern. The entire element would be aluminum with a consistent perforated image/pattern, giving a consistent look to the form. Lighting behind the aluminum 'screen' would give the element a 'lantern' like look and really make the imagery stand out visually. LED lighting could also change color to coordinate with holidays, seasons, events, etc.



TYPICAL ELEVATION

SCALE: 1/4"=1'-0"



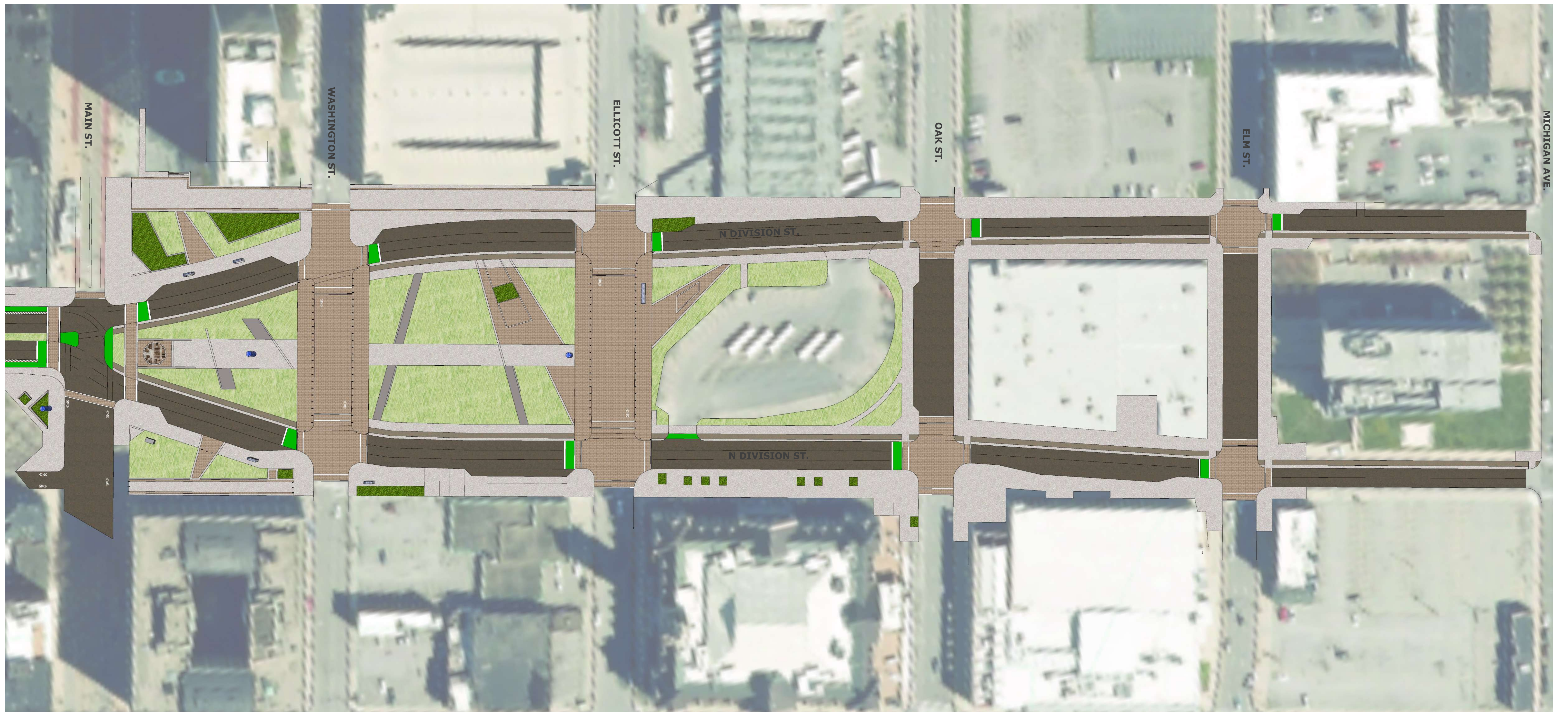
BASE LEVEL

TOP LEVEL

*STRUCTURAL SUPPORT & FRAMING TO BE DEVELOPED AND COORDINATED WITH MANUFACTURER

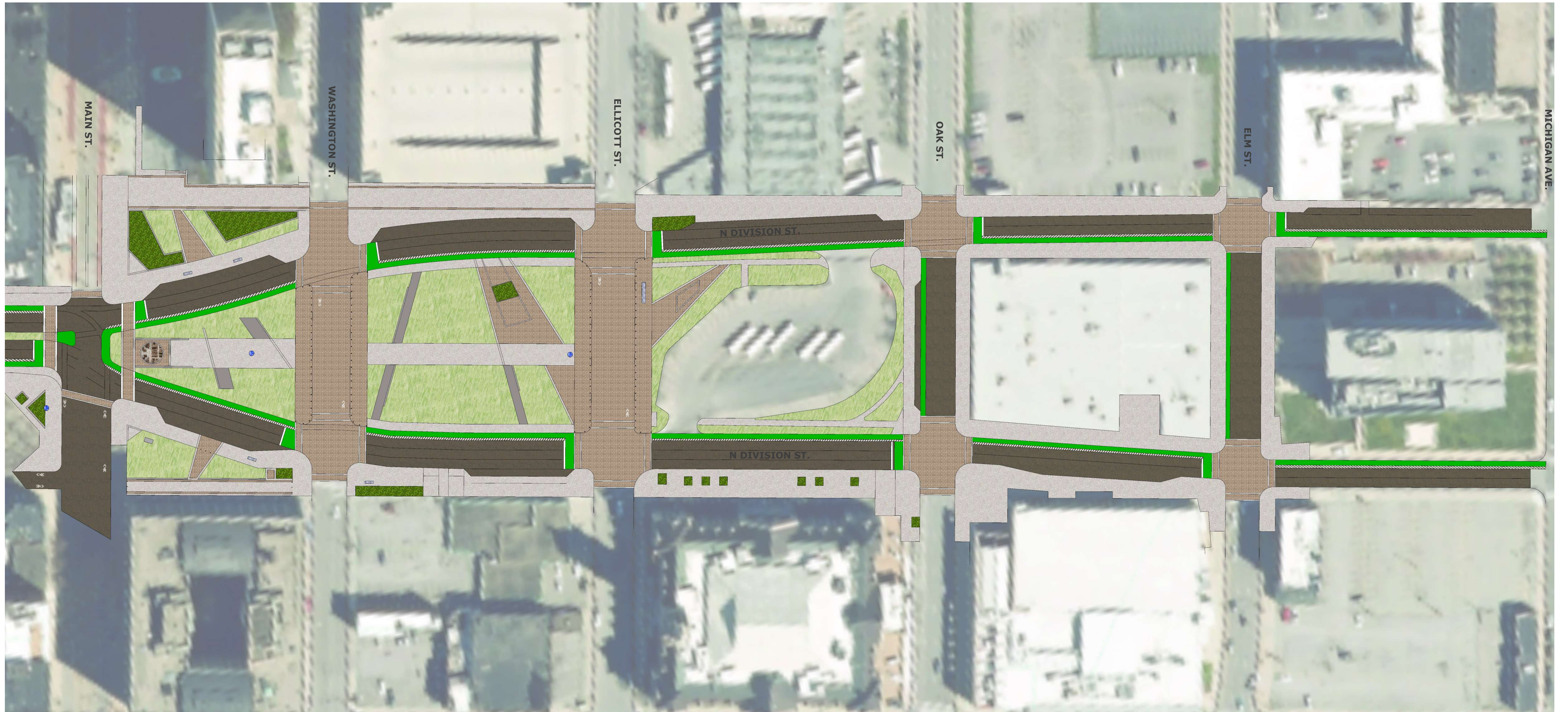
PLAN CONFIGURATION

SCALE: 1/2"=1'-0"



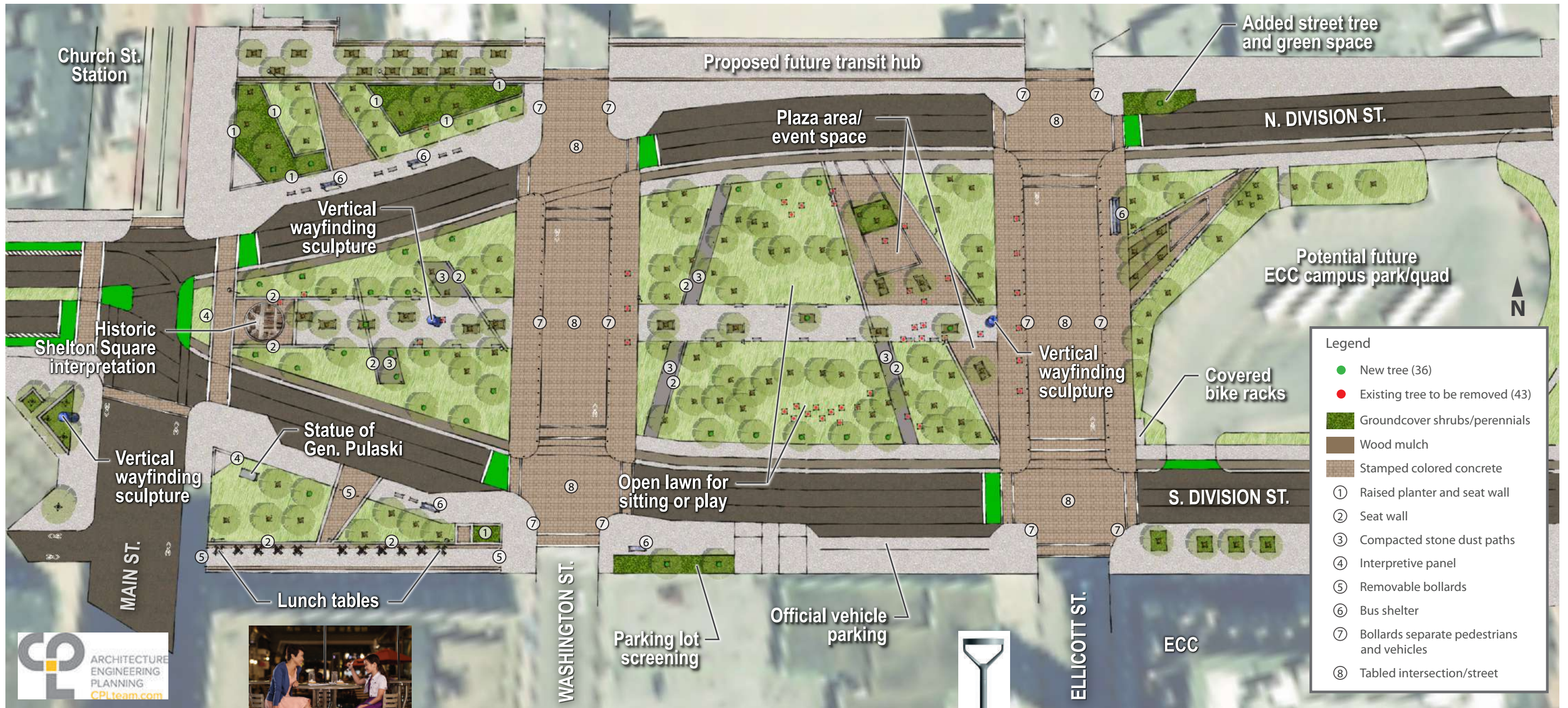
OPTION 1: SIDEWALK LEVEL CYCLE TRACK ON PARK SIDE/INSIDE

- ASSUMPTIONS:**
- 11' travel lanes
 - 15' bus-pull-off
 - 6' bike lane
 - 3' street buffer
 - 10' bike refuge/bike box at intersections



**OPTION 2: PROTECTED BIKE LANE
ON PARK SIDE/INSIDE**

- ASSUMPTIONS:**
- 11' travel lanes
 - 15' bus-pull-off
 - 6' bike lane
 - 3' street buffer
 - 10' bike refuge/bike box at intersections



N-S Division Park Spaces



Bistro Table, 36" round, bar height, silver metallic powder coat (Victor Stanley)

LED lit bollard for along stone dust paths, 16' spacing (Selux MTR Bollard)

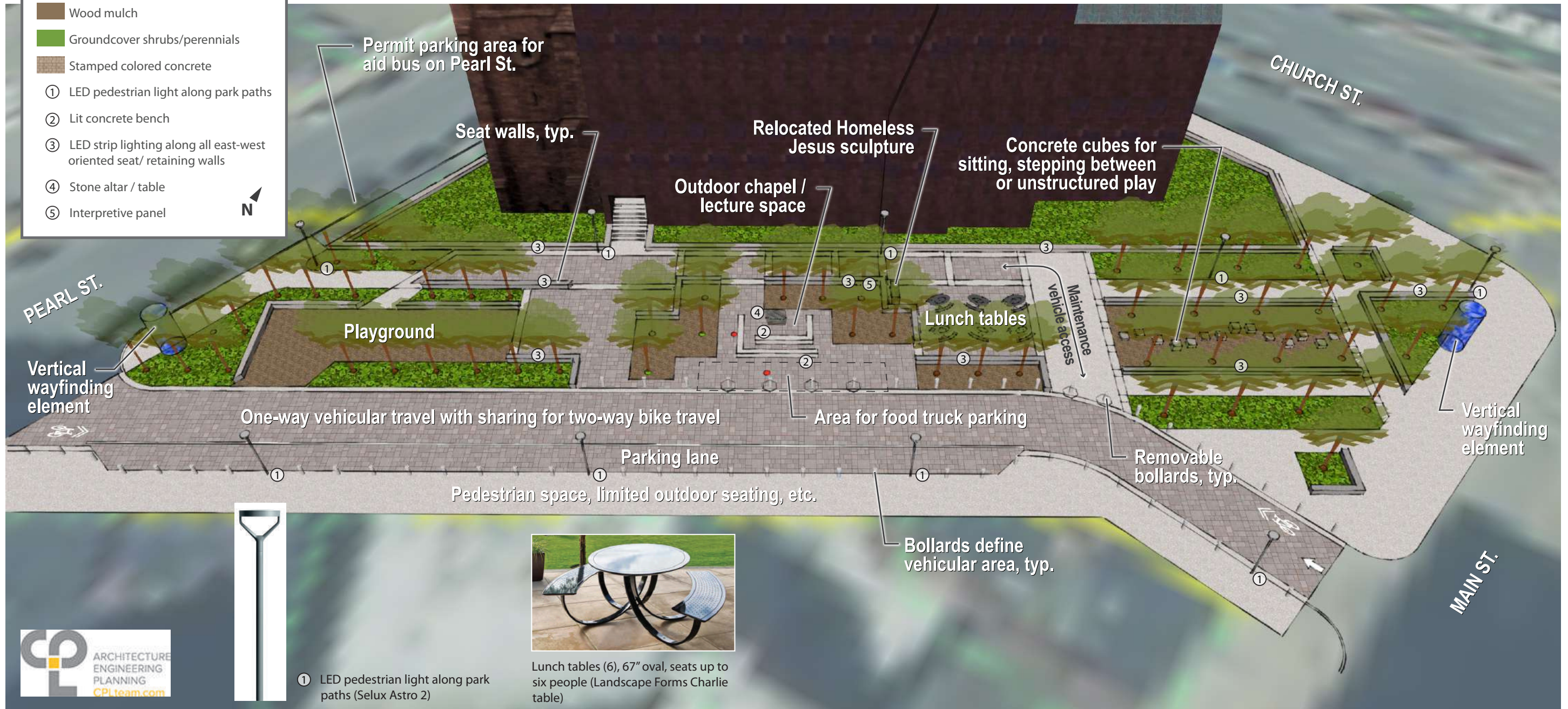


LED pedestrian light along park paths, 75' spacing (Selux Astro 2)



Legend

- New tree (3)
- Existing tree to be removed (2)
- ⬡ Denotes removable bollard (6)
- Wood mulch
- Groundcover shrubs/perennials
- Stamped colored concrete
- ① LED pedestrian light along park paths
- ② Lit concrete bench
- ③ LED strip lighting along all east-west oriented seat/ retaining walls
- ④ Stone altar / table
- ⑤ Interpretive panel



① LED pedestrian light along park paths (Selux Astro 2)



Lunch tables (6), 67" oval, seats up to six people (Landscape Forms Charlie table)

Cathedral Park

Cathedral Park

Buffalo, NY April 19, 2018 1126200-01-02-01



*Custom product manufacturing time for this project will be approximately 8 weeks from the time of LSI order acceptance.

©2018 Landscape Structures. All Rights Reserved.



FOR A BETTER TOMORROW
WE PLAY TODAY

shapedbyplay.com

Proudly presented by:

Lynn Mason



Cathedral Park

Buffalo, NY April 19, 2018 1126200-01-02-02



*Custom product manufacturing time for this project will be approximately 8 weeks from the time of LSI order acceptance.

©2018 Landscape Structures. All Rights Reserved.



FOR A BETTER TOMORROW
WE PLAY TODAY

shapedbyplay.com

Proudly presented by:

Lynn Mason





Legend

- New tree (1)
- Existing tree to be removed (8)
- ⬡ Denotes removable bollard (2)
- Groundcover shrubs/perennials
- Wood mulch
- Existing cobbles
- Stamped colored concrete
- ① LED pedestrian light along park paths
- ② Lit concrete bench
- ③ LED strip lighting along all seat/retaining walls
- ④ Interpretive panel (maritime history and information about anchor types)



Mariner's Plaza

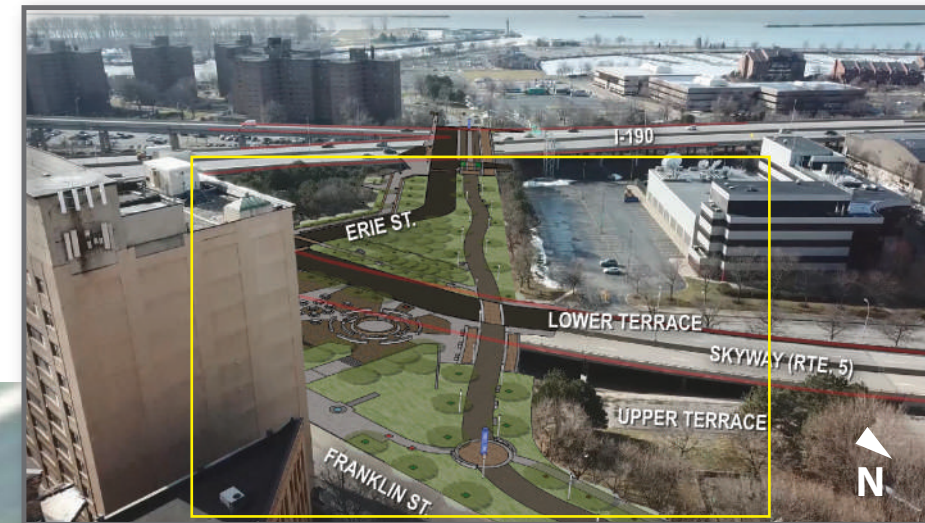


see concept for Erie Street Mall - west

① LED column-style pedestrian light along multi-use path (Selux MTR Round LED Column)

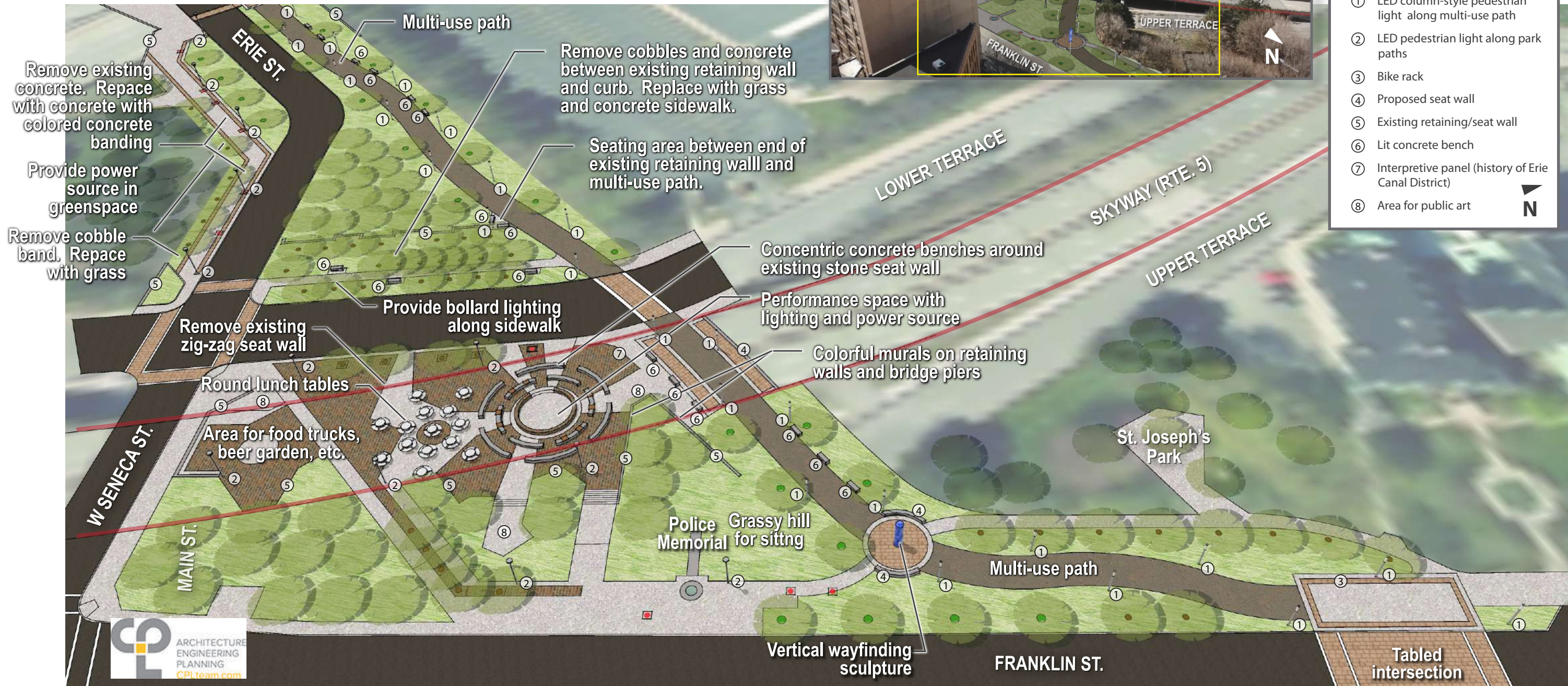


② LED pedestrian light along park paths (Selux Astro 2)



Legend

- New tree (24 - total for Erie Street Mall)
- Existing tree to be removed (10 - total for Erie Street Mall)
- Existing cobbles
- Stamped colored concrete
- Edge of overpass
- ① LED column-style pedestrian light along multi-use path
- ② LED pedestrian light along park paths
- ③ Bike rack
- ④ Proposed seat wall
- ⑤ Existing retaining/seat wall
- ⑥ Lit concrete bench
- ⑦ Interpretive panel (history of Erie Canal District)
- ⑧ Area for public art



Erie Street Mall - east



Inspiration image





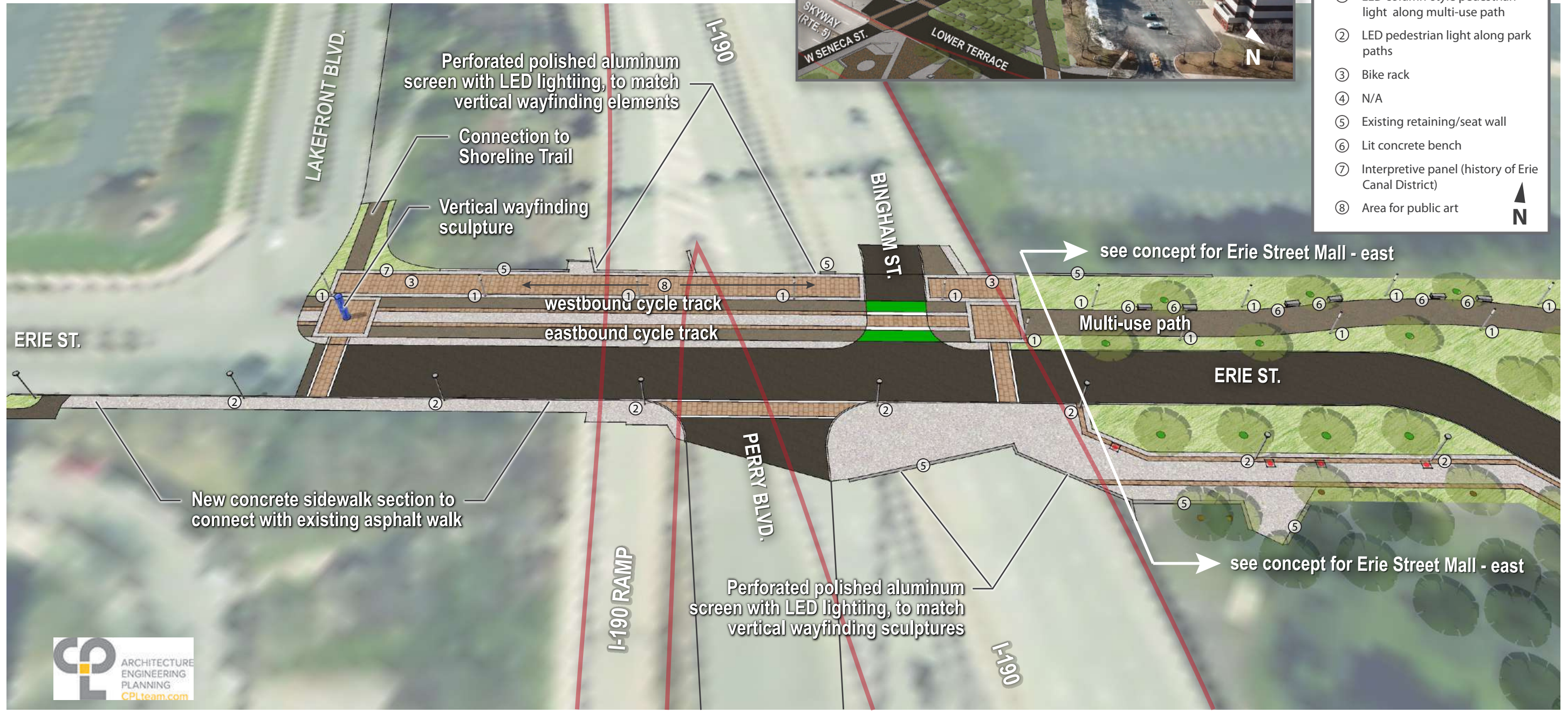


- Legend**
- New tree (24 - total for Erie Street Mall)
 - Existing tree to be removed (10 - total for Erie Street Mall)
 - Existing cobbles
 - Stamped colored concrete
 - Edge of overpass
 - ① LED column-style pedestrian light along multi-use path
 - ② LED pedestrian light along park paths
 - ③ Bike rack
 - ④ N/A
 - ⑤ Existing retaining/seat wall
 - ⑥ Lit concrete bench
 - ⑦ Interpretive panel (history of Erie Canal District)
 - ⑧ Area for public art

① LED column-style pedestrian light along multi-use path (Selux MTR Round LED Column)



② LED pedestrian light along park paths (Selux Astro 2)



Erie Street Mall - west





Inspiration image